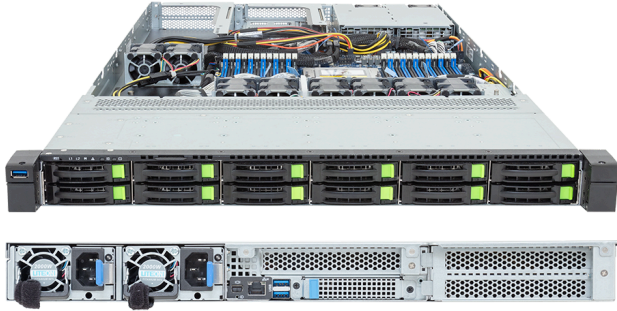


R163-ZG2-AAJ2 (Rev. 3.x)

Rack Server - AMD EPYC™ 9005/9004 Server Processors - 1U UP 1 x PCIe Gen5 GPU



Key Features

- Supports 1 x dual-slot Gen5 GPU
- Single AMD EPYC™ 9005/9004 Server Processors
- 12-Channel DDR5 RDIMM per CPU with 24 x DIMMs
- 12 x 2.5" Gen5 NVMe/SATA/SAS-4 hot-swap bays
- 2 x M.2 slots with PCIe Gen3 x2
- 1 x FHFL PCIe x16 (Gen5 x16) slot for GPUs
- 1 x FHFL PCIe x16 (Gen5 x16) slot
- 1 x FHHL PCIe x16 (Gen5 x16) slot
- 1 x OCP NIC 3.0 PCIe Gen5 x16 slot
- 1+1 2000 W 80 PLUS Titanium redundant power supplies

Applications

AI Platform, AI Inference Server, Visual Computing, Networks Server, Servers for Hybrid/Private Cloud...

Specification

Dimensions	1U (W438 x H43.5 x D815 mm)	PCIe Expansion Slots	1 x FHFL x16 (Gen5 x16), for GPUs 1 x FHFL x16 (Gen5 x16) ^[1] 1 x FHHL x16 (Gen5 x16) 1 x OCP NIC 3.0 (Gen5 x16), Support NCSI ^[1] Blocked when a dual-slot GPU is installed.
Motherboard	MZG3-GU0	I/O Ports	Front: 1 x USB 3.2 Gen1 Rear: 2 x USB 3.2 Gen1, 1 x Mini-DP, 1 x MLAN
CPU	AMD EPYC™ 9005 Server Processors AMD EPYC™ 9004 Server Processors Single processor, cTDP up to 400 W - At 25°C ambient, cTDP up to 500 W	Backplane Board	PCIe Gen5 x4 or SATA 6 Gb/s or SAS-4 24 Gb/s
OS Compatibility	OS Support List	TPM	1 x TPM header (SPI), Optional TPM 2.0 kit: CTM012
Socket	1 x LGA 6096 (Socket SP5)	Power Supply	1+1 2000 W 80 PLUS Titanium redundant power supplies AC Input: 100-240 V
Chipset	System on Chip	System Management	ASPEED® AST2600 Baseboard Management Controller GIGABYTE Management Console web interface
Memory	12-Channel DDR5 RDIMM, 24 x DIMMs [EPYC 9005] Up to 5200 MT/s (1DPC), Up to 4400 MT/s (1R 2DPC), 4000 MT/s (2R 2DPC) [EPYC 9004] Up to 4800 MT/s (1DPC), 3600 MT/s (2DPC)	System Fans	2 x 40x40x56mm 6 x 40x40x56mm
LAN	1 x 10/100/1000 Mb/s Management LAN	Operating Properties	Operating: 10°C to 30°C, 8% to 80% (non-condensing) Non-operating: -40°C to 60°C, 20% to 95% (non-condensing)
Video	Integrated in ASPEED® AST2600 - 1 x Mini-DP	Packaging Content	1 x R163-ZG2-AAJ2 1 x CPU heatsink 1 x Mini-DP to D-Sub cable 1 x GPU power cable (16-pin, 400mm) 1 x 2-Section Rail kit
Storage	Front hot-swap: 12 x 2.5" Gen5 NVMe/SATA/SAS-4 ^[1] Internal M.2: 2 x M.2 (2280/22110), PCIe Gen3 x2 ^[1] SAS card is required to support SAS drives.	Ordering Part Numbers	6NR163ZG2DR000ACJ2*
RAID	Require RAID add-in cards	Optional Parts	- 3-Section Rail kit (Supports CMA): 25HB2-A56121-K0R - Cable Management Arm: 25HB1-R18300-K0R



Learn more at: <https://www.gigabyte.com/Enterprise>

* All specifications are subject to change without notice. Please visit our website for the latest information.

* All trademarks and logos are the properties of their respective holders.

© 2026 Giga Computing Technology Co., Ltd. All rights reserved.

Last updated: Jul 1, 2026

Designed by

